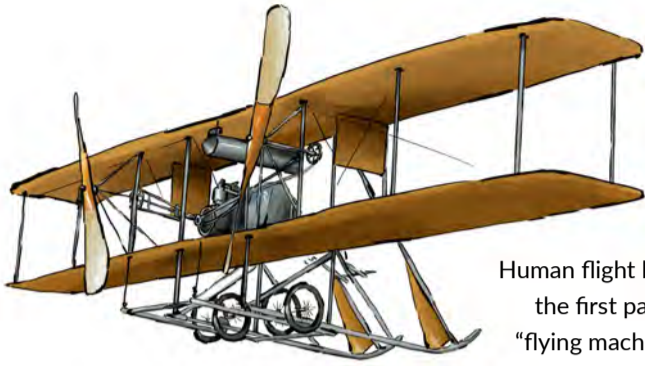


TRANSPORT



AIRPLANE

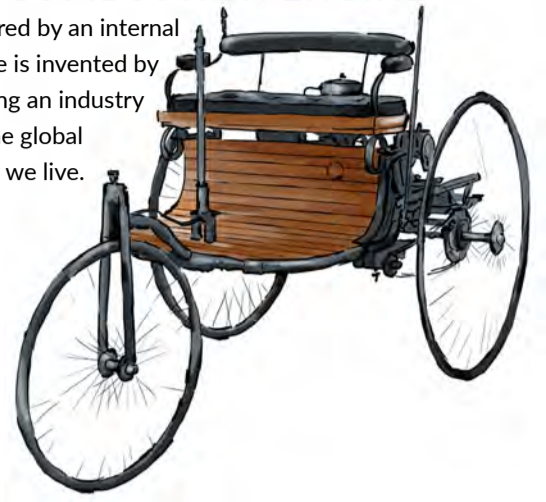
Human flight becomes viable when the first patent application for a "flying machine" is filed by Wilbur and Orville Wright.

1903

1908

INTERNAL COMBUSTION ENGINE

The first car powered by an internal combustion engine is invented by Carl Benz, launching an industry that has shaped the global economy and how we live.



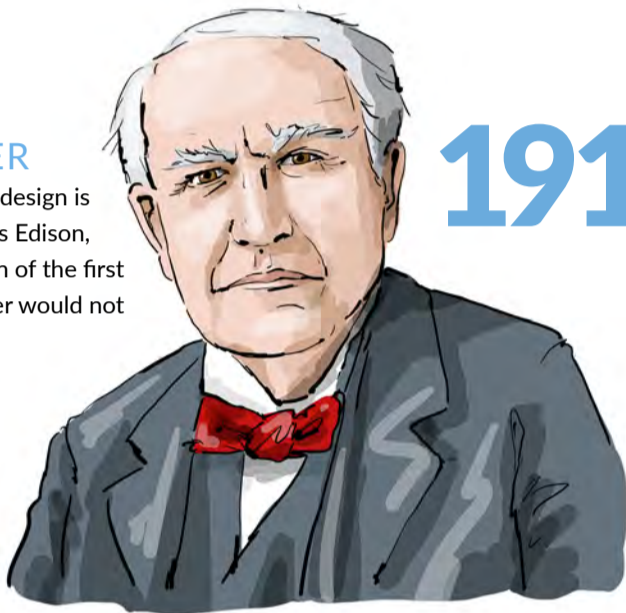
MODEL T

Industrial scale car production starts when the world is introduced to the Model T Ford, the first car to be built using the assembly line method.



HELICOPTER

The first helicopter design is patented by Thomas Edison, although production of the first "practical" helicopter would not begin until 1936.



1910

HOVERCRAFT

Sea travel is revolutionised when Christopher Cockerell invents the hovercraft, using air lubrication to travel faster than boats at the time by reducing hydrodynamic drag.



1956

CONCORDE

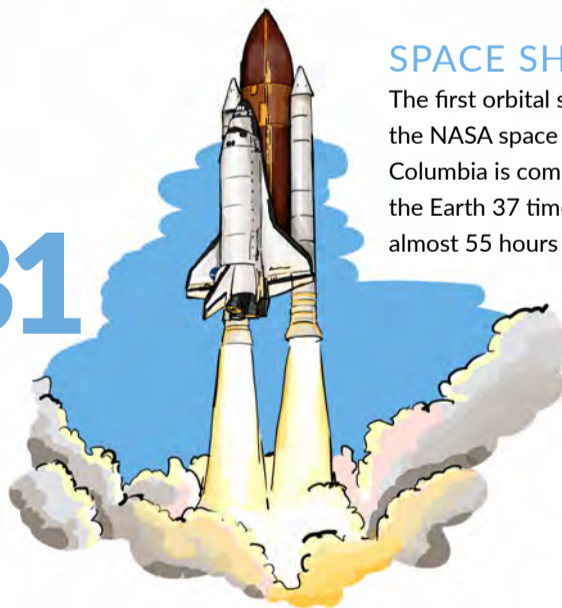
Supersonic air travel becomes a reality with Concorde's first flight, however passengers had to wait until 1976 for the first commercial flights between London and Bahrain and Paris and Brazil.

1969

1981

SPACE SHUTTLE

The first orbital spaceflight of the NASA space shuttle Columbia is completed, orbiting the Earth 37 times during almost 55 hours of flight.



1994

CHANNEL TUNNEL

After 6 years of tunnelling, and almost £5 billion investment, the Channel Tunnel is opened between England and France, boosting trade and tourism.



2002

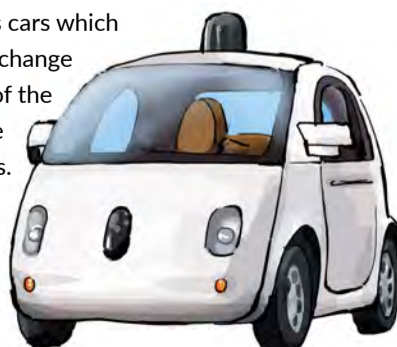
SEGWAY

The first Segway Personal Transporters (PT) are launched by inventor Dean Kamen, offering people an eco-friendly alternative to short car journeys.



AUTONOMOUS VEHICLES

British trials of semi-autonomous cars which represent the most fundamental change to transport since the invention of the internal combustion engine move from test centres to urban streets. Fully autonomous vehicles will eventually become the norm with driverless cars expected on Britain's roads by 2020.



2017